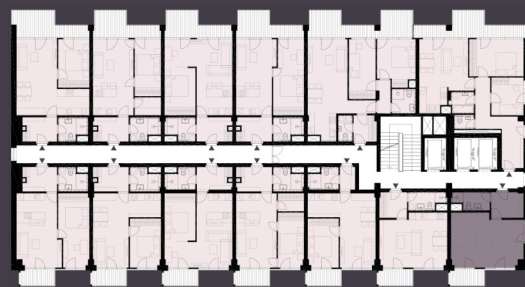
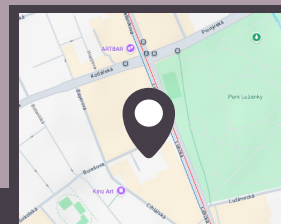
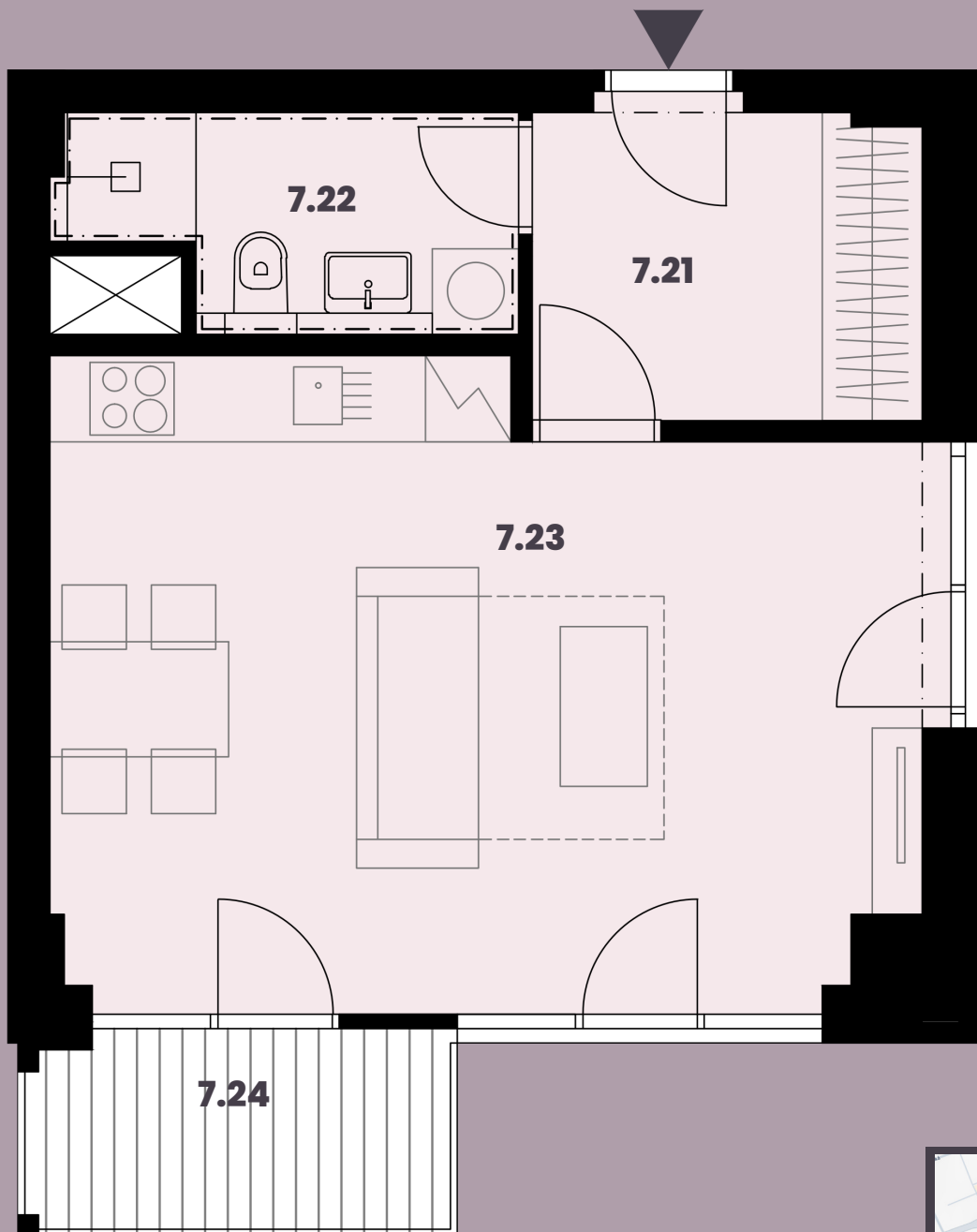


**Celková plocha: 41,30 m<sup>2</sup>**

7.21 Předstíň	5,80m <sup>2</sup>
7.22 Koupelna + WC	4,36m <sup>2</sup>
7.23 Obytná místnost s KK	24,82m <sup>2</sup>
7.24 Balkon	4,14m <sup>2</sup>



K bytu lze dokoupit parkovací stání a sklep.



Burešova 17, Brno