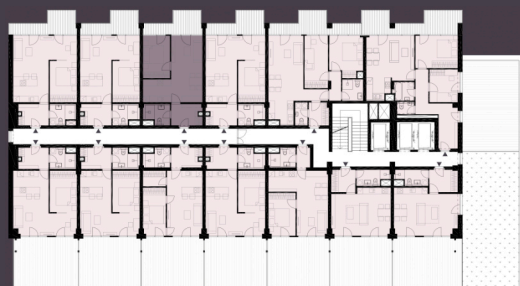
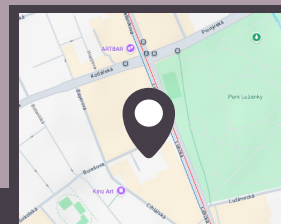
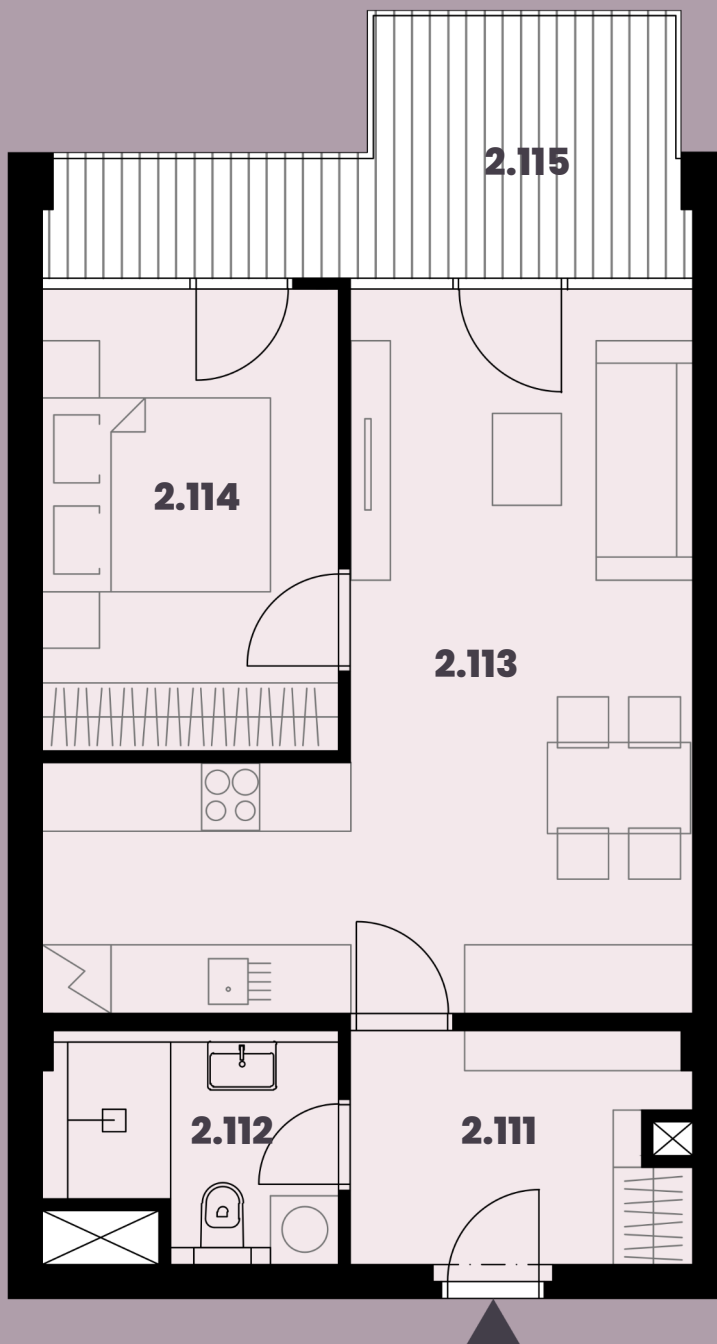


**Celková plocha: 57,10 m<sup>2</sup>**

2.111 Předsíň	5,89m <sup>2</sup>
2.112 Koupelna + WC	4,65m <sup>2</sup>
2.113 Obytná místnost s KK	24,98m <sup>2</sup>
2.114 Ložnice	10,53m <sup>2</sup>
2.115 Balkon	9,20m <sup>2</sup>



K bytu lze dokoupit parkovací stání a sklep.



Burešova 17, Brno